



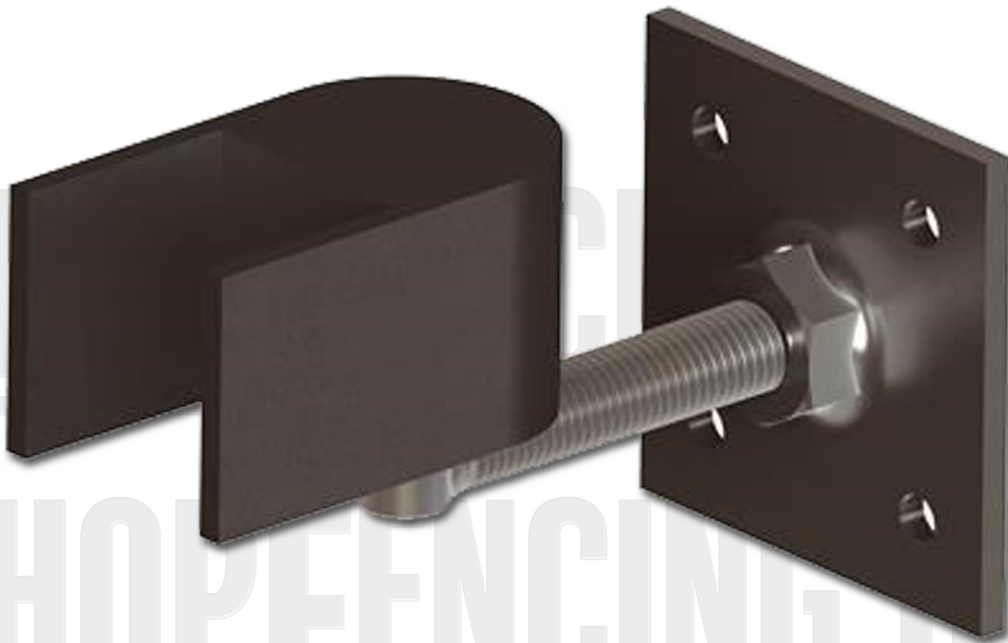
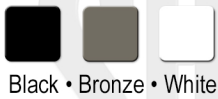
**PHONE:** 704.533.3651



## Heavy Duty NOT Self-Closing Gate Hinge

Strong & Rust Resistant • Fits 4" x 4" Posts & 2" x 2" Gate Frame • Aluminum On Gate Side & Steel Post Plate  
AAMA2604 Powder Coating • **Bolt To Post & Weld To Gate** • NOT Self-Closing • Zinc Plated Threaded Rod Adjustment  
Includes 1 Hinge • For Gates Up To 900lbs • A Minimum Of 2 Hinges Required Per Gate

### CHOOSE COLOR



These heavy duty hinges wrap around three sides of a 2" gate frame for extra strength. Bolt to post and Weld to Gate. Non Self-Closing they are ideal for automated gates.